



All size guides are shown as 'half-chest' measurement, in centimetres.

Half-chest is a standard measure for clothing, and refers to the distance from one armpit to the other when the garment is laid flat.

**A - CHEST WIDTH**

**B - BODY LENGTH**

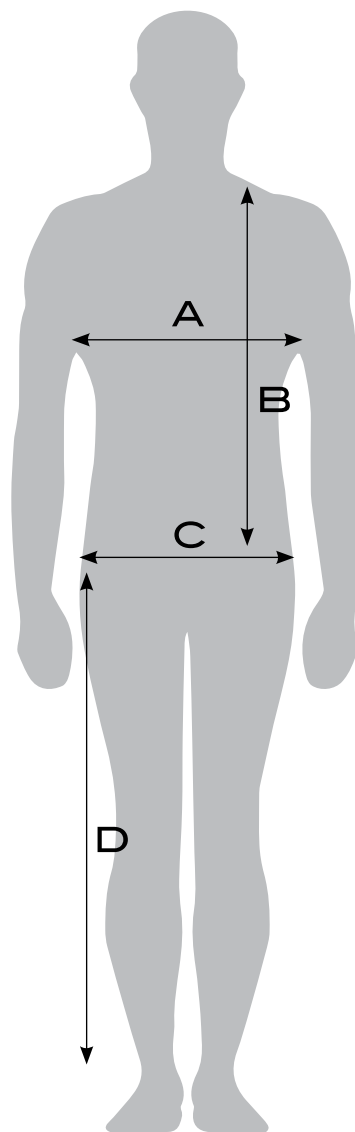
**C - WAIST**

**D - LEG LENGTH**

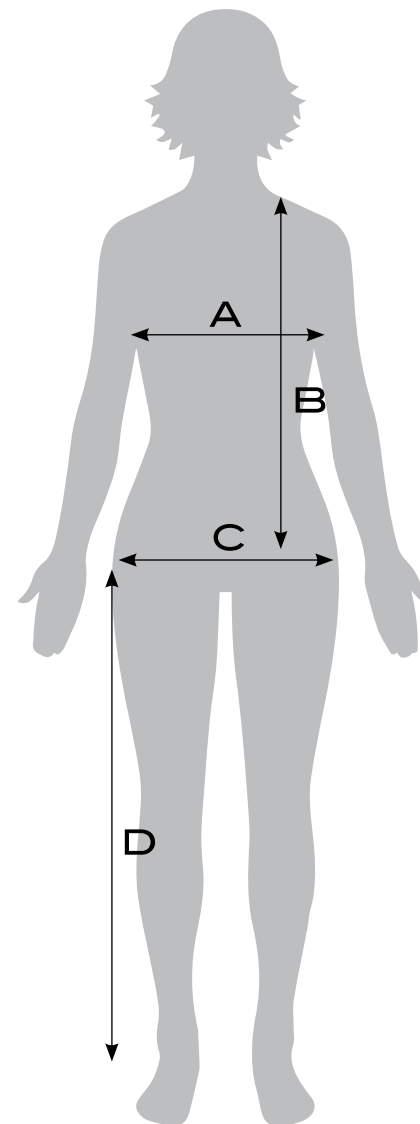
**IMPORTANT**

Every care has been taken to provide our sizing charts online, but the responsibility of selecting the correct size based on our guides rests with YOU the client.

Please refer to your club samples before placing your order.



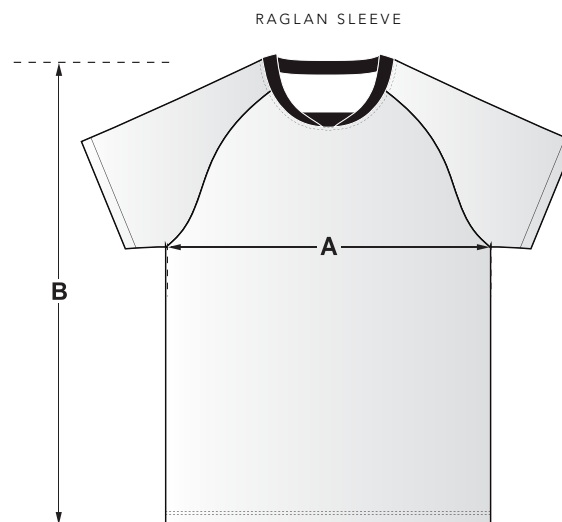
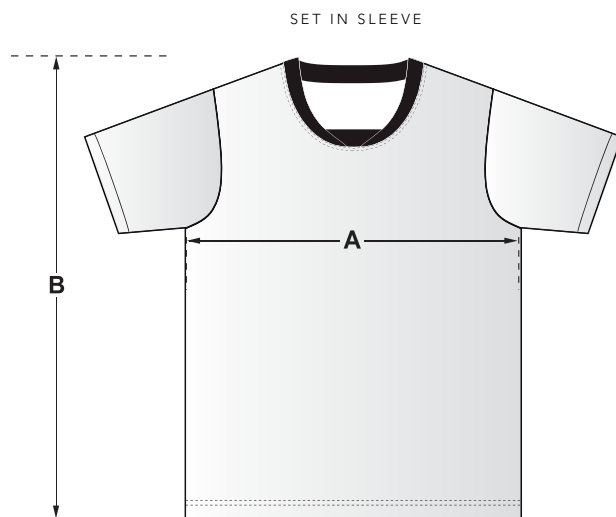
**MEN**



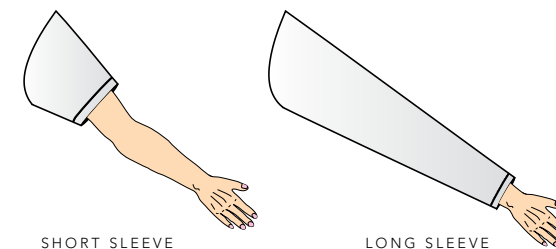
**WOMEN**

# MENS STANDARD WARMUP TEE

## STANDARD WARMUP TEE - MEN



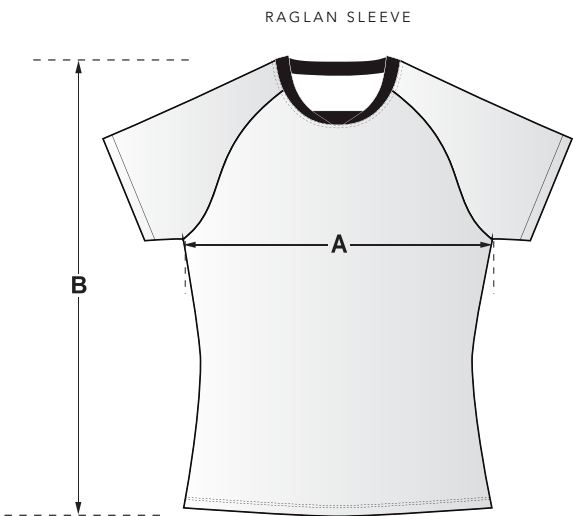
### SLEEVE OPTIONS



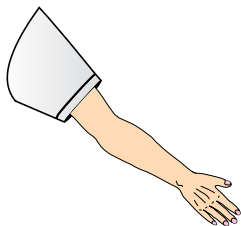
	SUITABLE FOR KIDS							Measurements in 1.0 cm    Tolerance +/- 1.0 cm							
MEASUREMENT (CM)	4	6	8	10	12	14	XS	S	M	L	XL	2XL	3XL	4XL	5XL
CHEST WIDTH - A	36	38	39	40	42	44	48	52	54	57	60	62	65	68	70
BODY LENGTH - B	48	50	54	58	62	65	67	70	72	74	76	78	80	82	84

Every care has been taken to provide our sizing charts, but the responsibility of selecting the correct size based on our guides rests with YOU the client. To help you choose the best size, we recommend that you compare the measurements with your own garments. Garment panels may be removed from the design when sublimation is the chosen garment type.

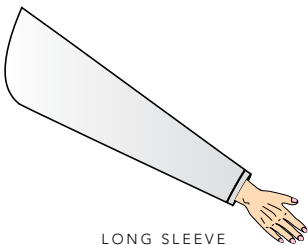
NOTE: ALL MEASUREMENTS ARE MADE WITH THE GARMENT LAID FLAT AND MEASURED SEAM TO SEAM



SLEEVE OPTIONS



SHORT SLEEVE



LONG SLEEVE

SUITABLE FOR KIDS															
Measurements in 1.0 cm    Tolerance +/- 1.0 cm															
MEASUREMENT (CM)	4	6	8	10	12	14	XS	S	M	L	XL	2XL	3XL	4XL	5XL
CHEST WIDTH - A	29	31	33	35	37	39	41	43	45	47	49	51	53	55	57
BODY LENGTH - B	43	46	49	52	55	58	61	63	65	67	69	71	73	75	77

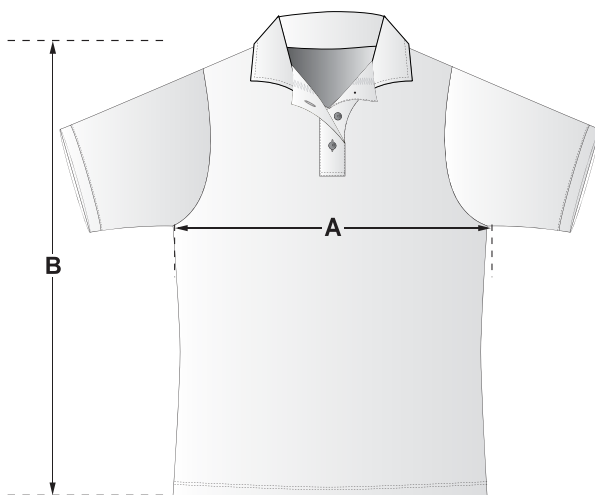
Every care has been taken to provide our sizing charts, but the responsibility of selecting the correct size based on our guides rests with YOU the client. To help you choose the best size, we recommend that you compare the measurements with your own garments. Garment panels may be removed from the design when sublimation is the chosen garment type.

NOTE: ALL MEASUREMENTS ARE MADE WITH THE GARMENT LAID FLAT AND MEASURED SEAM TO SEAM

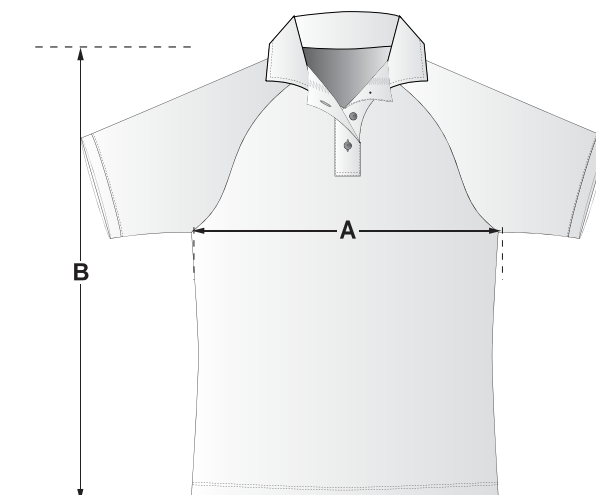
# MENS STANDARD POLO

## STANDARD POLO - MEN

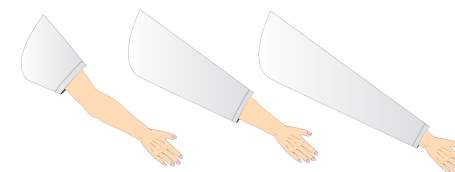
SET IN SLEEVE



RAGLAN SLEEVE



SLEEVE OPTIONS



SHORT  
SLEEVE

3/4  
SLEEVE

LONG  
SLEEVE

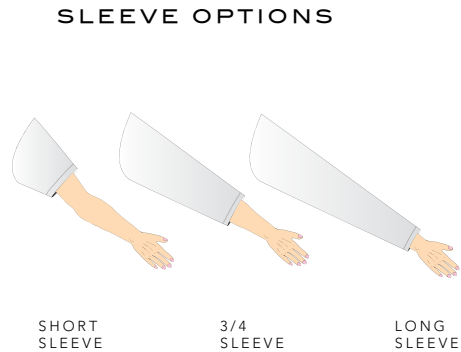
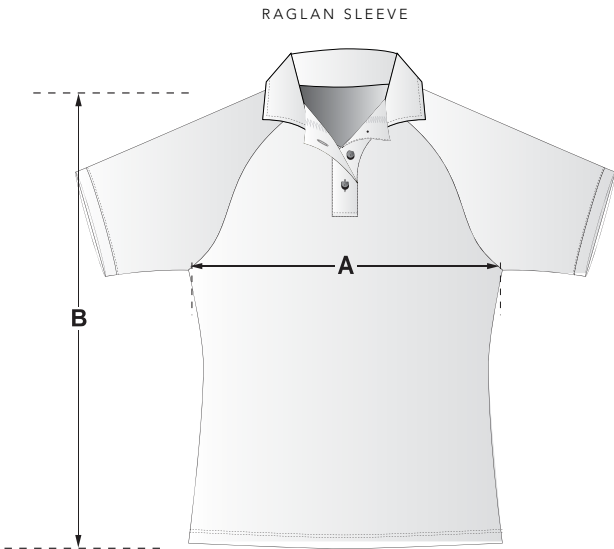
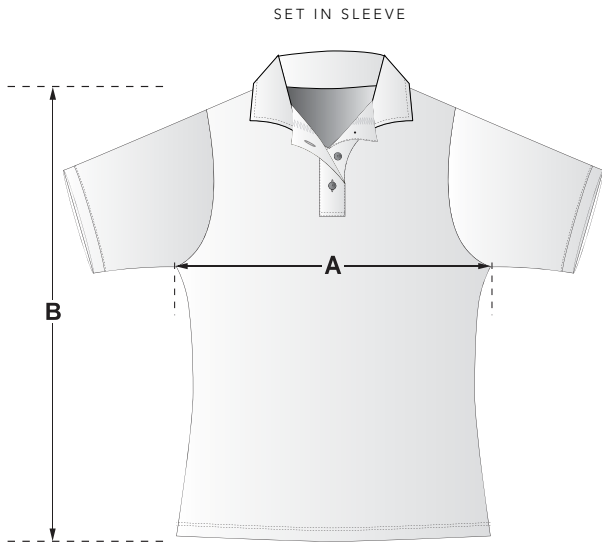
### SUITABLE FOR KIDS

Measurements in 1.0 cm Tolerance +/- 1.0 cm

MEASUREMENT (CM)	4	6	8	10	12	14	XS	S	M	L	XL	2XL	3XL	4XL	5XL	6XL	7XL	8XL	9XL
CHEST WIDTH - A	36	38	39	40	42	44	48	52	54	57	60	62	65	68	70	72	74	76	78
BODY LENGTH - B	48	50	54	58	62	65	67	70	72	74	76	78	80	82	84	86	88	90	92

Every care has been taken to provide our sizing charts, but the responsibility of selecting the correct size based on our guides rests with YOU the client. To help you choose the best size, we recommend that you compare the measurements with your own garments. Garment panels may be removed from the design when sublimation is the chosen garment type.

NOTE: ALL MEASUREMENTS ARE MADE WITH THE GARMENT LAID FLAT AND MEASURED SEAM TO SEAM



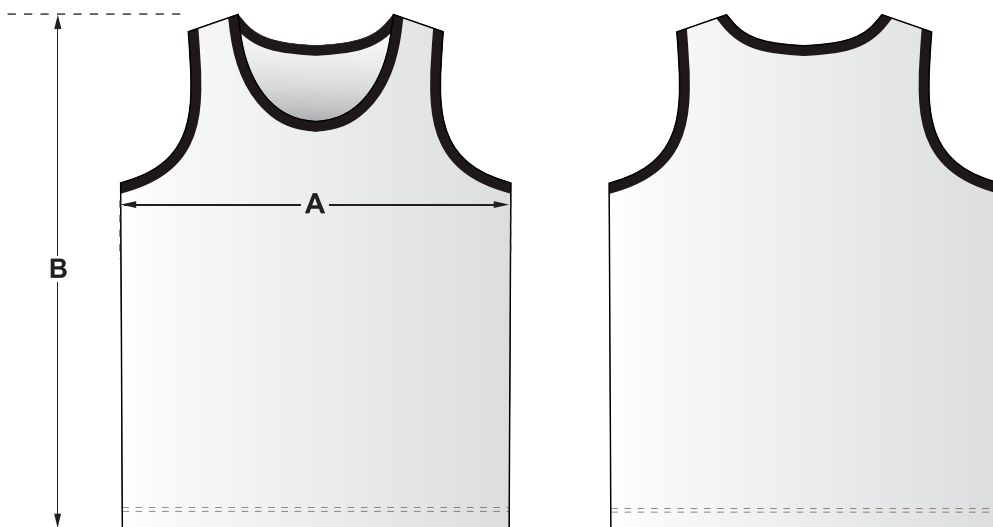
	SUITABLE FOR KIDS						Measurements in 1.0 cm    Tolerance +/- 1.0 cm						
MEASUREMENT (CM)	6	8	10	12	XS	S	M	L	XL	2XL	3XL	4XL	5XL
CHEST WIDTH - A	40	42	44	46	48	50	52	54	56	58	60	62	64
BODY LENGTH - B	61	62	63	64	65	66	67	68	69	70	71	73	75

Every care has been taken to provide our sizing charts, but the responsibility of selecting the correct size based on our guides rests with YOU the client. To help you choose the best size, we recommend that you compare the measurements with your own garments. Garment panels may be removed from the design when sublimation is the chosen garment type.

NOTE: ALL MEASUREMENTS ARE MADE WITH THE GARMENT LAID FLAT AND MEASURED SEAM TO SEAM

# MENS STANDARD SINGLET

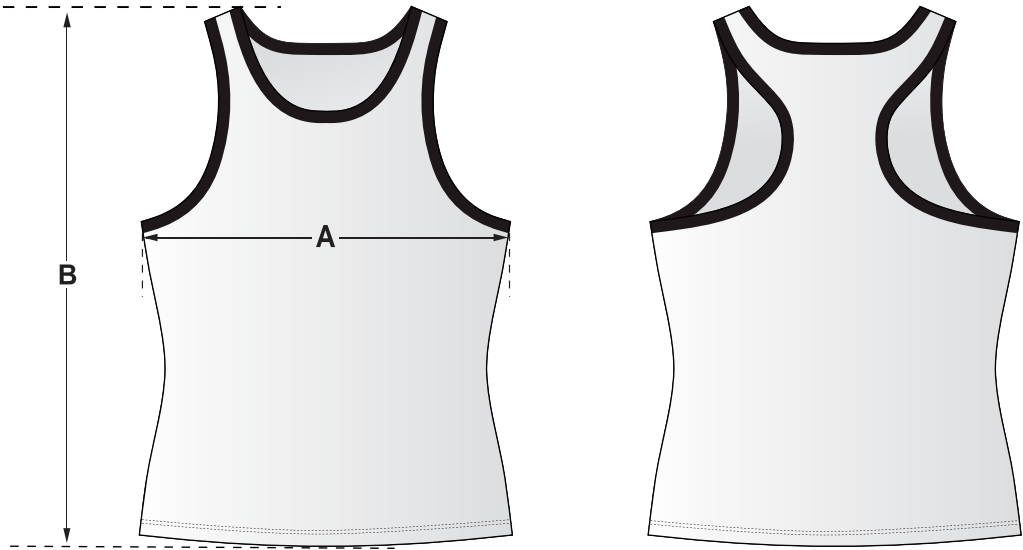
## STANDARD SINGLET - MEN



	SUITABLE FOR KIDS							Measurements in 1.0 cm    Tolerance +/- 1.0 cm							
MEASUREMENT (CM)	4	6	8	10	12	14	XS	S	M	L	XL	2XL	3XL	4XL	5XL
CHEST WIDTH - A	36	38	39	40	42	44	48	52	54	57	60	62	65	68	70
BODY LENGTH - B	46	48	52	56	60	63	65	68	70	72	74	76	78	80	82

Every care has been taken to provide our sizing charts, but the responsibility of selecting the correct size based on our guides rests with YOU the client. To help you choose the best size, we recommend that you compare the measurements with your own garments. Garment panels may be removed from the design when sublimation is the chosen garment type.

NOTE: ALL MEASUREMENTS ARE MADE WITH THE GARMENT LAID FLAT AND MEASURED SEAM TO SEAM



SUITABLE FOR KIDS															
Measurements in 1.0 cm    Tolerance +/- 1.0 cm															
MEASUREMENT (CM)	4	6	8	10	12	14	XS	S	M	L	XL	2XL	3XL	4XL	5XL
CHEST WIDTH - A	29	31	33	35	37	39	41	43	45	47	49	51	53	55	57
BODY LENGTH - B	43	46	49	52	55	58	61	63	65	67	69	71	73	75	77

Every care has been taken to provide our sizing charts, but the responsibility of selecting the correct size based on our guides rests with YOU the client. To help you choose the best size, we recommend that you compare the measurements with your own garments. Garment panels may be removed from the design when sublimation is the chosen garment type.

NOTE: ALL MEASUREMENTS ARE MADE WITH THE GARMENT LAID FLAT AND MEASURED SEAM TO SEAM

## WOMEN'S BASKETBALL JERSEY

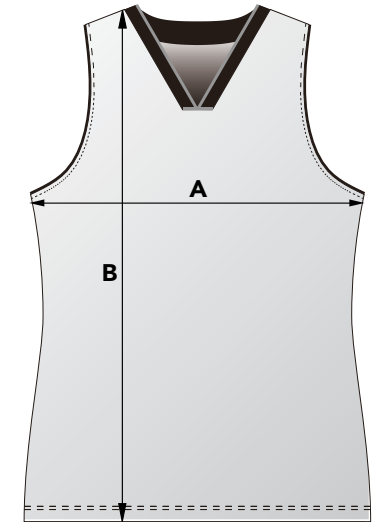
SUITABLE FOR KIDS

Measurements in 1.0 cm Tolerance +/- 1.0 cm

MEASUREMENT (CM)	4	6	8	10	12	14	XS	S	M	L	XL	2XL	3XL	4XL
CHEST WIDTH - A	33	35	37	39	41	43	45	47	49	51	53	55	57	59
BODY LENGTH - B	42	45	49	53	57	61	65	67	69	71	73	75	79	81

Every care has been taken to provide our sizing charts, but the responsibility of selecting the correct size based on our guides rests with YOU the client. To help you choose the best size, we recommend that you compare the measurements with your own garments. Garment panels may be removed from the design when sublimation is the chosen garment type.

NOTE: ALL MEASUREMENTS ARE MADE WITH THE GARMENT LAID FLAT AND MEASURED SEAM TO SEAM



## MEN'S BASKETBALL JERSEY

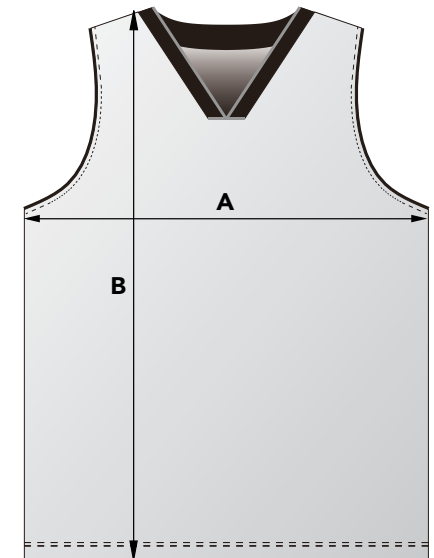
SUITABLE FOR KIDS

Measurements in 1.0 cm Tolerance +/- 1.0 cm

MEASUREMENT (CM)	4	6	8	10	12	14	XS	S	M	L	XL	2XL	3XL	4XL
CHEST WIDTH - A	36	40	42	44	47	49	51	54	57	59	61	64	67	69
BODY LENGTH - B	45	50	57	60	63	66	70	73	75	76	78	79	81	82

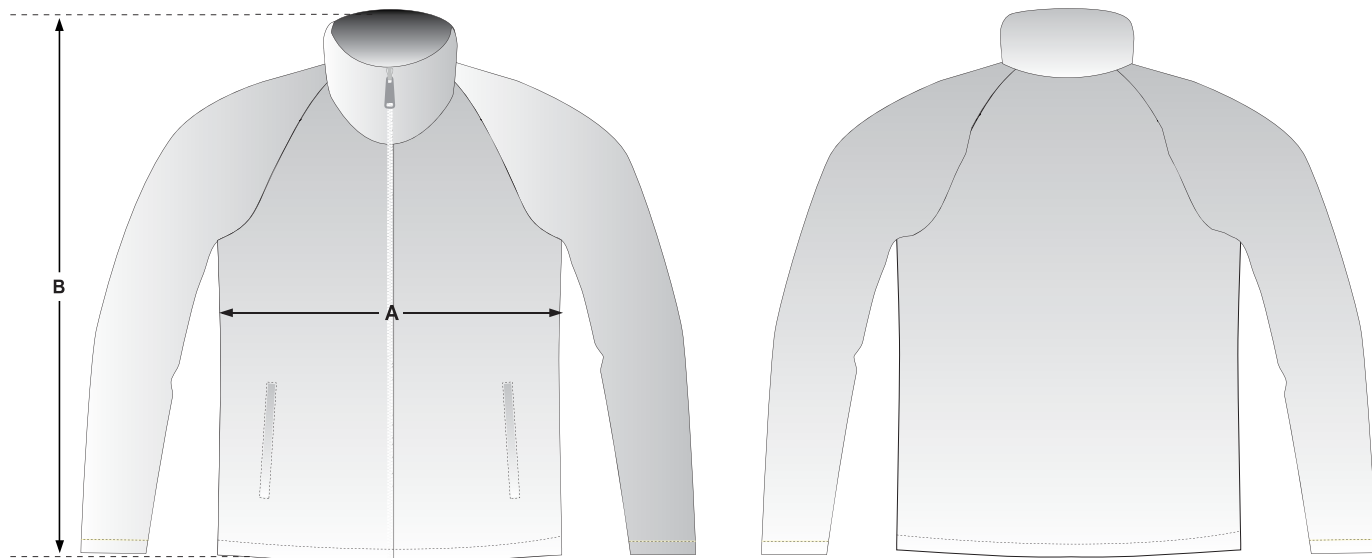
Every care has been taken to provide our sizing charts, but the responsibility of selecting the correct size based on our guides rests with YOU the client. To help you choose the best size, we recommend that you compare the measurements with your own garments. Garment panels may be removed from the design when sublimation is the chosen garment type.

NOTE: ALL MEASUREMENTS ARE MADE WITH THE GARMENT LAID FLAT AND MEASURED SEAM TO SEAM





# TRACKSUIT JACKET (SUBLIMATION)



SUITABLE FOR KIDS

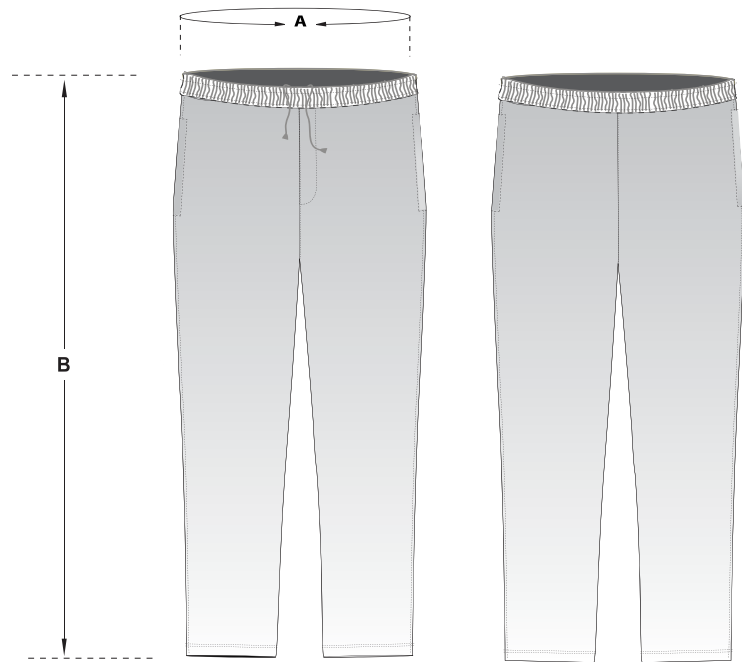
Measurements in 1.0 cm Tolerance +/- 1.0 cm

MEASUREMENT (CM)	4	6	8	10	12	14	XS	S	M	L	XL	2XL	3XL	4XL	5XL
WIDTH - A	41	44	47	50	53	56	58	60	62	64	66	68	70	72	74
LENGTH - B	50	52	56	60	64	68	70	72	74	76	78	80	82	84	86

Every care has been taken to provide our sizing charts, but the responsibility of selecting the correct size based on our guides rests with YOU the client. To help you choose the best size, we recommend that you compare the measurements with your own garments. Garment panels may be removed from the design when sublimation is the chosen garment type.

NOTE: ALL MEASUREMENTS ARE MADE WITH THE GARMENT LAID FLAT AND MEASURED SEAM TO SEAM

# TRACKSUIT PANTS (SUBLIMATION)



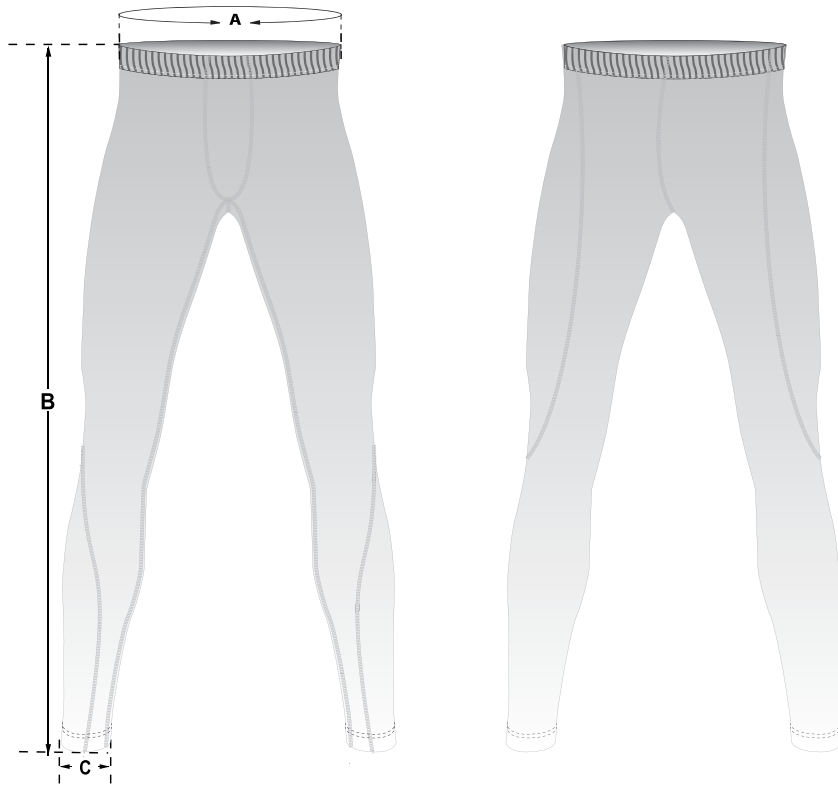
## SUITABLE FOR KIDS

Measurements in 1.0 cm Tolerance +/- 1.0 cm

MEASUREMENT (CM)	4	6	8	10	12	XS	S	M	L	XL	2XL	3XL
WAIST - A	52	56	58	60	64	66	68	70	74	76	80	84
LENGTH - B	72	76	80	84	88	92	96	100	104	108	112	116

Every care has been taken to provide our sizing charts, but the responsibility of selecting the correct size based on our guides rests with YOU the client. To help you choose the best size, we recommend that you compare the measurements with your own garments. Garment panels may be removed from the design when sublimation is the chosen garment type.

## COMPRESSION PANTS (SUBLIMATION)

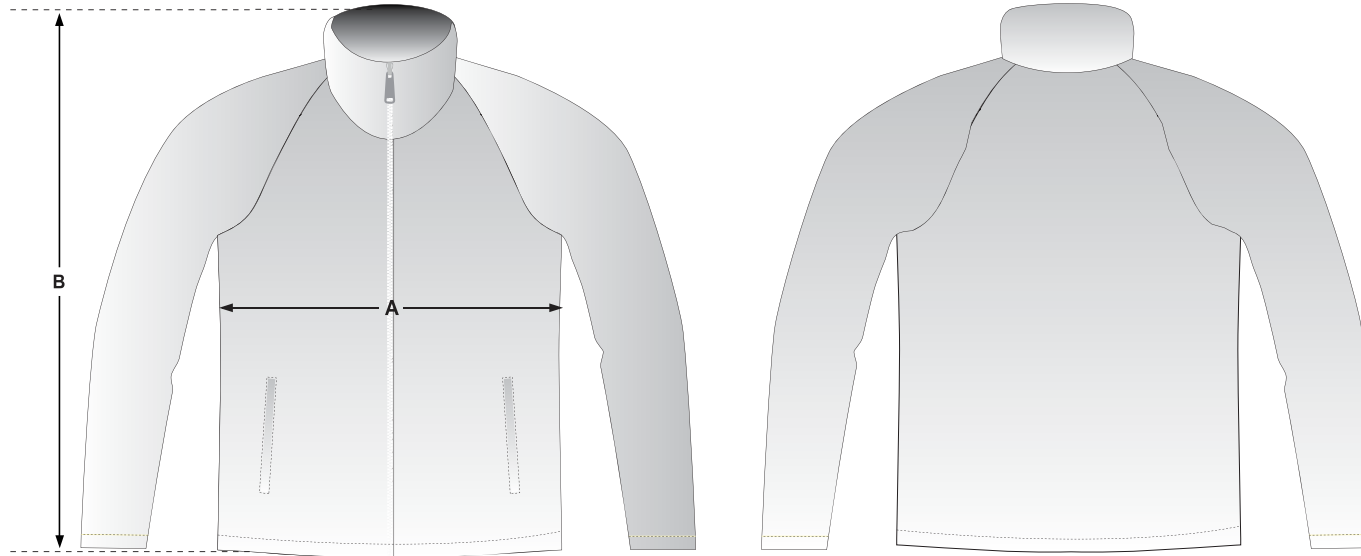


Measurements in 1.0 cm Tolerance +/- 1.0 cm

MEASUREMENT (CM)	XS	S	M	L	XL	2XL	3XL
WAIST - A	42	46	50	54	58	62	66
LENGTH - B (includes waist)	85	87	89	91	93	95	97
LEG OPENING - C	9	9.5	10	10.5	11	11.5	12

Every care has been taken to provide our sizing charts, but the responsibility of selecting the correct size based on our guides rests with YOU the client. To help you choose the best size, we recommend that you compare the measurements with your own garments. Garment panels may be removed from the design when sublimation is the chosen garment type.

## CUT &amp; SEW TRACKSUIT JACKET (EMBROIDERY LOGOS)



## SUITABLE FOR KIDS

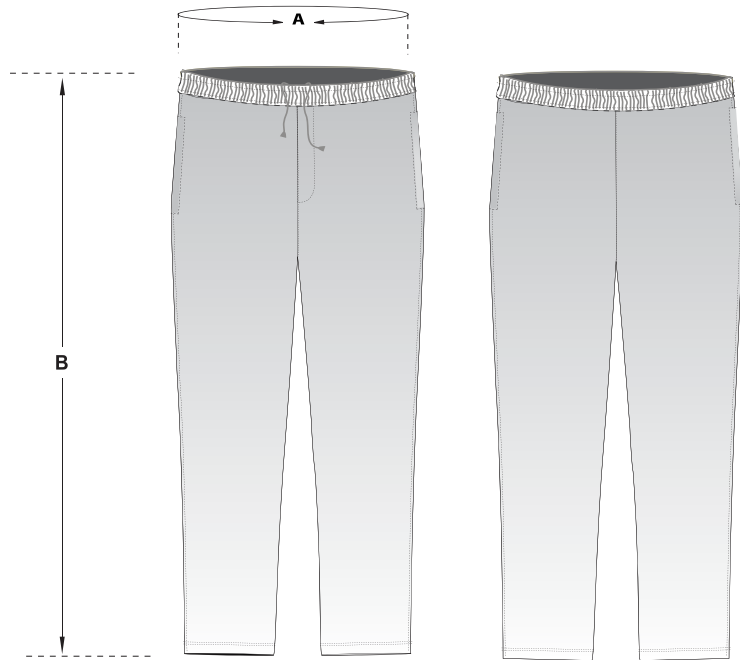
Measurements in 1.0 cm Tolerance +/- 1.0 cm

MEASUREMENT (CM)	4	6	8	10	12	XS	S	M	L	XL	2XL	3XL	4XL	5XL
WIDTH - A	37	42	45	49	51	55	57	60	62	65	67	70	72	75
LENGTH - B	44	50	54	59	62	65	69	74	77	79	82	84	87	90

Every care has been taken to provide our sizing charts, but the responsibility of selecting the correct size based on our guides rests with YOU the client. To help you choose the best size, we recommend that you compare the measurements with your own garments. Garment panels may be removed from the design when sublimation is the chosen garment type.

NOTE: ALL MEASUREMENTS ARE MADE WITH THE GARMENT LAID FLAT AND MEASURED SEAM TO SEAM

## CUT &amp; SEW TRACKSUIT PANTS (EMBROIDERY LOGOS)



SUITABLE FOR KIDS

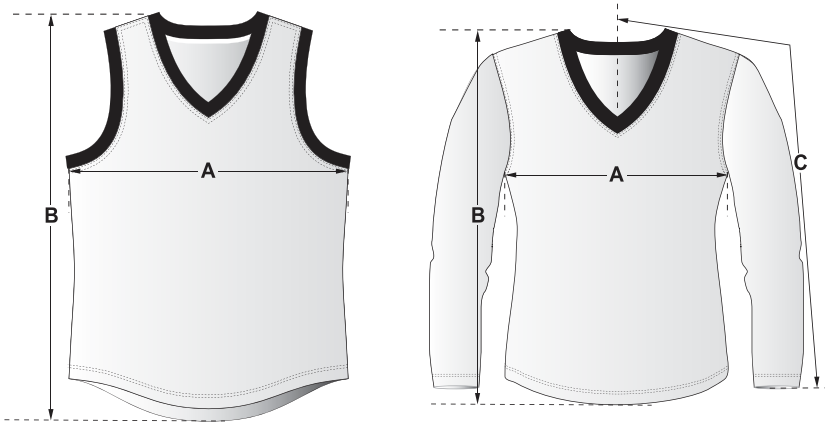
Measurements in 1.0 cm Tolerance +/- 1.0 cm

MEASUREMENT (CM)	4	6	8	10	12	XS	S	M	L	XL	2XL	3XL	4XL	5XL
WAIST - A	56	58	60	63	66	71	76	82	86	91	96	101	106	111
LENGTH - B	66	72	78	86	94	101	106	108	110	112	112	113	113	114

Every care has been taken to provide our sizing charts, but the responsibility of selecting the correct size based on our guides rests with YOU the client. To help you choose the best size, we recommend that you compare the measurements with your own garments. Garment panels may be removed from the design when sublimation is the chosen garment type.

NOTE: ALL MEASUREMENTS ARE MADE WITH THE GARMENT LAID FLAT AND MEASURED SEAM TO SEAM

## AUSSIE RULES GUERNSEY



## NECKLINE OPTIONS



AFL001 - Laker neck



AFL002 - Elite neck



AFL003 - Std V neck



AFL004 - PRO neck

## SUITABLE FOR KIDS

Measurements in 1.0 cm Tolerance +/- 1.0 cm

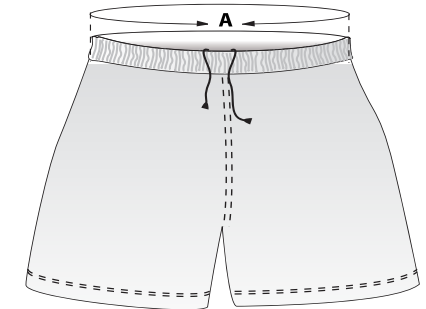
MEASUREMENT (CM)	4	6	8	10	12	14	XS	S	M	L	XL	2XL	3XL	4XL	5XL
CHEST WIDTH - A	36	38	40	42	44	46	49	51	53	55	57	59	61	63	65
BODY LENGTH - B	50	53	56	59	62	65	67	69	71	73	75	77	79	80	81
SLEEVE LENGTH - C	58	61	64	67	70	73	77	79.5	82	84.5	87	89.5	92	94.5	97

## AUSSIE RULES SHORTS

## SUITABLE FOR KIDS

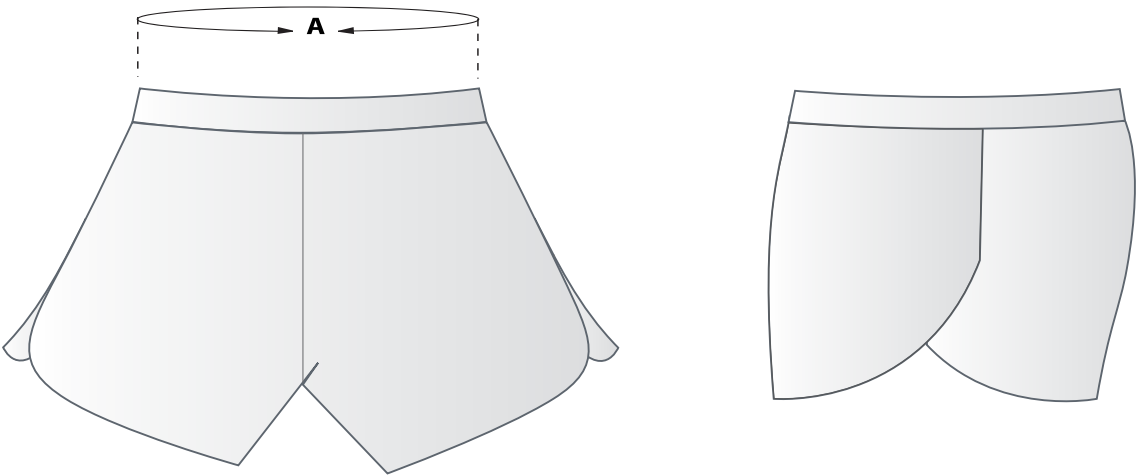
Measurements in 1.0 cm Tolerance +/- 1.0 cm

MEASUREMENT (CM)	4	6	8	10	12	14	XS	S	M	L	XL	2XL	3XL	4XL	5XL
WAIST - A	48	52	54	56	60	62	64	66	70	72	76	80	82	86	90



Every care has been taken to provide our sizing charts, but the responsibility of selecting the correct size based on our guides rests with YOU the client. To help you choose the best size, we recommend that you compare the measurements with your own garments. Garment panels may be removed from the design when sublimation is the chosen garment type.

SUBLIMATED RUNNING SHORTS



SUITABLE FOR KIDS

Measurements in 1.0 cm Tolerance +/- 1.0 cm

MEASUREMENT (CM)	4	6	8	10	12	14	XS	S	M	L	XL	2XL	3XL	4XL	5XL
WAIST - A	56	58	60	62	64	66	68	70	72	76	80	84	88	92	96

Every care has been taken to provide our sizing charts, but the responsibility of selecting the correct size based on our guides rests with YOU the client. To help you choose the best size, we recommend that you compare the measurements with your own garments. Garment panels may be removed from the design when sublimation is the chosen garment type.

## WOMEN'S PANEL SINGLET

SUITABLE FOR KIDS

Measurements in 1.0 cm Tolerance +/- 1.0 cm

MEASUREMENT (CM)	3XS	2XS	XS	SMALL	MEDIUM	LARGE	XL	2XL	3XL
LENGTH - A	55	57	59	61	63	65	67	69	71
CHEST - B	31	33	36	39	41	44	47	50	53
WAIST WIDTH - C	29	32	35	38	40	43	46	48	52
BOTTOM WIDTH - D	32	34	38	40	43	45	48	48	54

Every care has been taken to provide our sizing charts, but the responsibility of selecting the correct size based on our guides rests with YOU the client. To help you choose the best size, we recommend that you compare the measurements with your own garments. Garment panels may be removed from the design when sublimation is the chosen garment type.



NOTE: ALL MEASUREMENTS ARE MADE WITH THE GARMENT LAID FLAT AND MEASURED SEAM TO SEAM

## MEN'S PANEL SINGLET

SUITABLE FOR KIDS

Measurements in 1.0 cm Tolerance +/- 1.0 cm

MEASUREMENT (CM)	3XS	2XS	XS	SMALL	MEDIUM	LARGE	XL	2XL	3XL
LENGTH - A	62	64	67	71	73	76	78	81	83
CHEST - B	36	39	41	45	48	50	53	57	60
WAIST WIDTH - C	35	38	40	43	46	48	51	53	56
BOTTOM WIDTH - D	36	39	41	45	48	50	53	55	58

Every care has been taken to provide our sizing charts, but the responsibility of selecting the correct size based on our guides rests with YOU the client. To help you choose the best size, we recommend that you compare the measurements with your own garments. Garment panels may be removed from the design when sublimation is the chosen garment type.



NOTE: ALL MEASUREMENTS ARE MADE WITH THE GARMENT LAID FLAT AND MEASURED SEAM TO SEAM



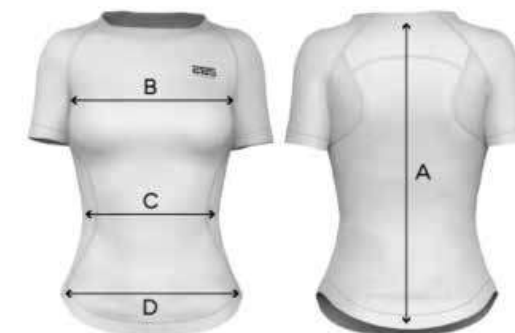
## WOMEN'S PANEL WARMUP TEE

SUITABLE FOR KIDS

Measurements in 1.0 cm Tolerance +/- 1.0 cm

MEASUREMENT (CM)	3XS	2XS	XS	SMALL	MEDIUM	LARGE	XL	2XL	3XL	4XL	5XL
LENGTH - A	53	56	59	61	64	66	68	71	73	76	78
CHEST - B	32	35	38	40	43	46	48	51	54	57	60
WAIST WIDTH - C	30	32	35	38	40	43	46	48	51	54	57
BOTTOM WIDTH - D	36	39	42	44	47	50	52	55	58	61	64

Every care has been taken to provide our sizing charts, but the responsibility of selecting the correct size based on our guides rests with YOU the client. To help you choose the best size, we recommend that you compare the measurements with your own garments. Garment panels may be removed from the design when sublimation is the chosen garment type.



NOTE: ALL MEASUREMENTS ARE MADE WITH THE GARMENT LAID FLAT AND MEASURED SEAM TO SEAM

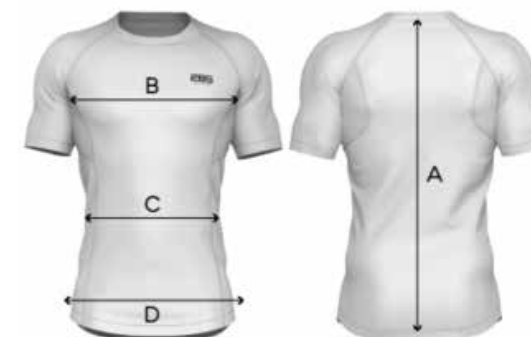
## MEN'S PANEL WARMUP TEE

SUITABLE FOR KIDS

Measurements in 1.0 cm Tolerance +/- 1.0 cm

MEASUREMENT (CM)	3XS	2XS	XS	SMALL	MEDIUM	LARGE	XL	2XL	3XL	4XL	5XL
LENGTH - A	62	65	67	70	72	75	77	80	82	84	86
CHEST - B	40	43	45	48	50	54	56	60	63	67	70
WAIST WIDTH - C	37	40	43	45	48	50	54	56	60	63	67
BOTTOM WIDTH - D	40	43	45	48	50	54	56	60	63	67	70

Every care has been taken to provide our sizing charts, but the responsibility of selecting the correct size based on our guides rests with YOU the client. To help you choose the best size, we recommend that you compare the measurements with your own garments. Garment panels may be removed from the design when sublimation is the chosen garment type.



NOTE: ALL MEASUREMENTS ARE MADE WITH THE GARMENT LAID FLAT AND MEASURED SEAM TO SEAM

## WOMEN'S PANEL POLO

SUITABLE FOR KIDS

Measurements in 1.0 cm Tolerance +/- 1.0 cm

MEASUREMENT (CM)	3XS	2XS	XS	SMALL	MEDIUM	LARGE	XL	2XL	3XL	4XL	5XL
LENGTH - A	55	58	61	62	64	66	68	70	72	75	77
CHEST - B	34	37	39	42	45	48	50	53	55	58	61
BOTTOM WIDTH - C	37	39	42	44	48	50	53	55	58	61	64



NOTE: ALL MEASUREMENTS ARE MADE WITH THE GARMENT LAID FLAT AND MEASURED SEAM TO SEAM

Every care has been taken to provide our sizing charts, but the responsibility of selecting the correct size based on our guides rests with YOU the client. To help you choose the best size, we recommend that you compare the measurements with your own garments. Garment panels may be removed from the design when sublimation is the chosen garment type.

## MEN'S PANEL POLO

SUITABLE FOR KIDS

Measurements in 1.0 cm Tolerance +/- 1.0 cm

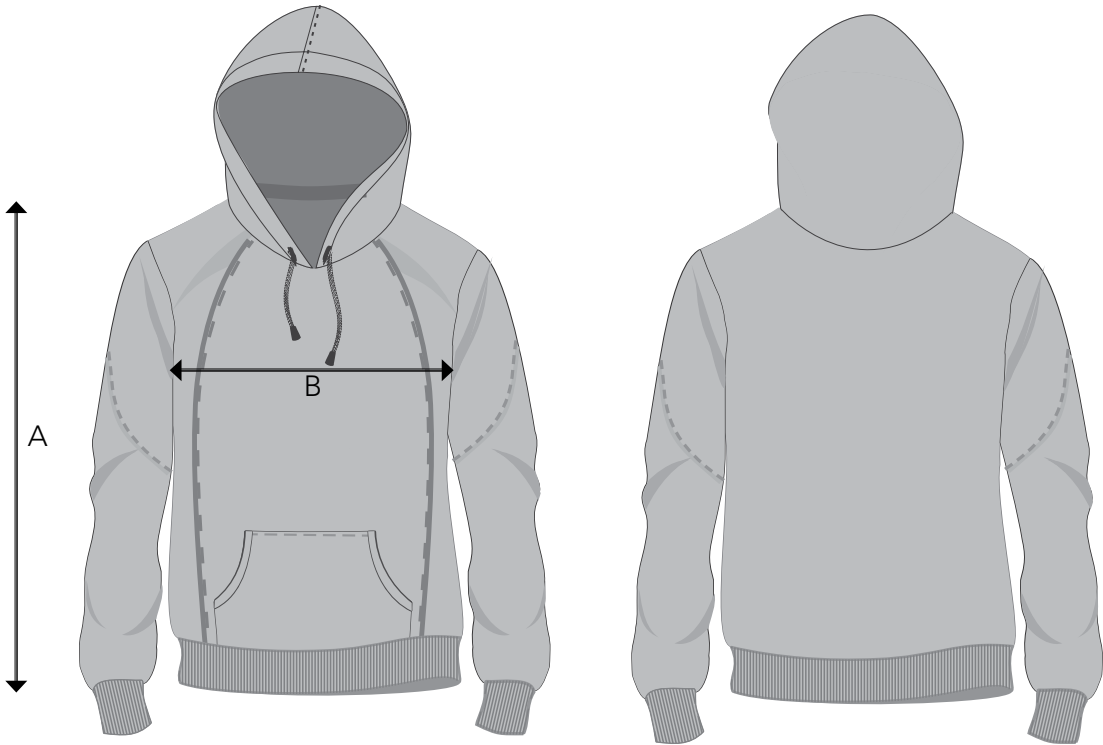
MEASUREMENT (CM)	3XS	2XS	XS	SMALL	MEDIUM	LARGE	XL	2XL	3XL	4XL	5XL
LENGTH - A	60	63	66	68	71	73	76	78	81	83	86
CHEST - B	43	46	48	51	53	56	58	61	63	66	68
BOTTOM WIDTH - C	41	43	46	48	51	53	56	58	61	63	66



NOTE: ALL MEASUREMENTS ARE MADE WITH THE GARMENT LAID FLAT AND MEASURED SEAM TO SEAM

Every care has been taken to provide our sizing charts, but the responsibility of selecting the correct size based on our guides rests with YOU the client. To help you choose the best size, we recommend that you compare the measurements with your own garments. Garment panels may be removed from the design when sublimation is the chosen garment type.

STANDARD FIT HOODIES



Suitable For Kids

Measurements in 1.0 cm    Tolerance +/- 1.0 cm

MEASUREMENT (CM)	4	6	8	10	12	14	XS	S	M	L	XL	2XL	3XL	4XL	5XL
LENGTH - A	45	50	54	58	62	66	69	70	71	72	73	74	75	76	77
CHEST - B	34	38	41	44	47	50	54	55	57	58	60	61	63	64	66

Every care has been taken to provide our sizing charts, but the responsibility of selecting the correct size based on our guides rests with YOU the client. To help you choose the best size, we recommend that you compare the measurements with your own garments. Garment panels may be removed from the design when sublimation is the chosen garment type.

NOTE: ALL MEASUREMENTS ARE MADE WITH THE GARMENT LAID FLAT AND MEASURED SEAM TO SEAM

## PANEL HOODIES



Suitable For Kids

Measurements in 1.0 cm Tolerance +/- 1.0 cm

MEASUREMENT (CM)	3XS	2XS	XS	SMALL	MEDIUM	LARGE	XL	2XL	3XL	4XL	5XL
LENGTH - A	63	65	68	70	73	75	78	80	83	85	87
CHEST - B	43	45	48	50	53	56	59	62	65	67	69
WAIST WIDTH - C	40	43	45	48	51	53	56	59	62	64	66
BOTTOM WIDTH - D	43	45	48	50	53	56	59	62	65	67	69

Every care has been taken to provide our sizing charts, but the responsibility of selecting the correct size based on our guides rests with YOU the client. To help you choose the best size, we recommend that you compare the measurements with your own garments. Garment panels may be removed from the design when sublimation is the chosen garment type.

NOTE: ALL MEASUREMENTS ARE MADE WITH THE GARMENT LAID FLAT AND MEASURED SEAM TO SEAM